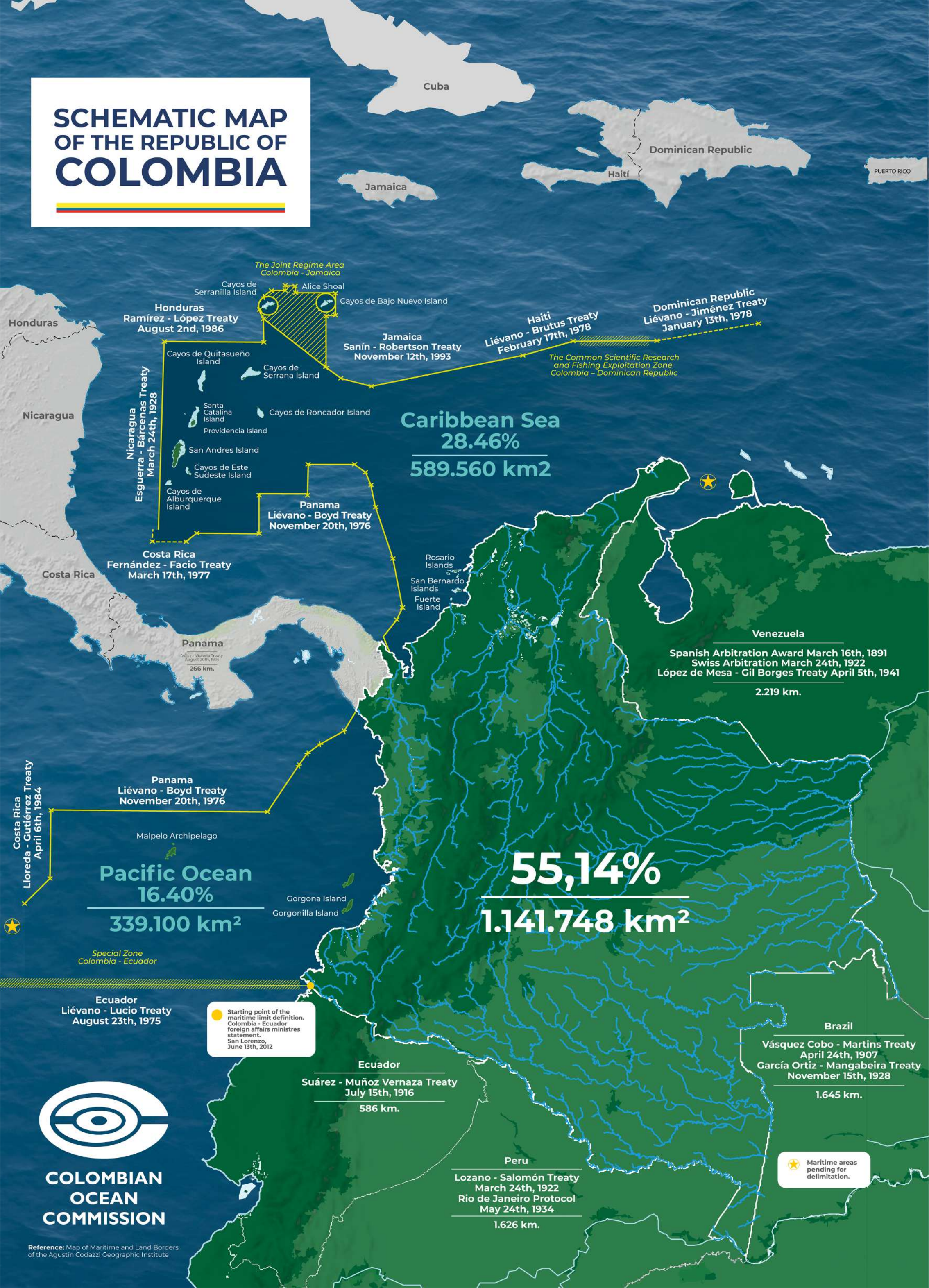


SCHEMATIC MAP OF THE REPUBLIC OF COLOMBIA



Cuba

Dominican Republic

PUERTO RICO

Jamaica

Haití

The Joint Regime Area
Colombia - Jamaica

Honduras
Ramírez - López Treaty
August 2nd, 1986

Alice Shoal
Cayos de Bajo Nuevo Island

Jamaica
Sanín - Robertson Treaty
November 12th, 1993

Haiti
Liévano - Brutus Treaty
February 17th, 1978

Dominican Republic
Liévano - Jiménez Treaty
January 13th, 1978

The Common Scientific Research
and Fishing Exploitation Zone
Colombia - Dominican Republic

Nicaragua
Esguerra - Bárcenas Treaty
March 24th, 1928

Cayos de Quitasueño
Island

Cayos de Serrana
Island

Santa Catalina
Island

Providencia Island

San Andres Island

Cayos de Este
Sudeste Island

Cayos de Alburquerque
Island

Cayos de Roncador Island

Caribbean Sea
28.46%
589.560 km²

Panama
Liévano - Boyd Treaty
November 20th, 1976

Costa Rica
Fernández - Facio Treaty
March 17th, 1977

Rosario Islands
San Bernardo Islands
Fuerte Island

Venezuela

Spanish Arbitration Award March 16th, 1891
Swiss Arbitration March 24th, 1922
López de Mesa - Gil Borges Treaty April 5th, 1941

2.219 km.

Costa Rica
Lloreda - Gutiérrez Treaty
April 6th, 1984

Panama
Liévano - Boyd Treaty
November 20th, 1976

Pacific Ocean
16.40%
339.100 km²

Malpelo Archipelago

Gorgona Island
Gorgonilla Island

55,14%
1.141.748 km²

Special Zone
Colombia - Ecuador

Ecuador
Liévano - Lucio Treaty
August 23th, 1975

Starting point of the maritime limit definition.
Colombia - Ecuador
foreign affairs ministers
statement.
San Lorenzo,
June 13th, 2012

Ecuador
Suárez - Muñoz Vernaza Treaty
July 15th, 1916
586 km.

Brazil

Vásquez Cobo - Martins Treaty
April 24th, 1907
García Ortiz - Mangabeira Treaty
November 15th, 1928

1.645 km.

Maritime areas pending for delimitation.

Peru
Lozano - Salomón Treaty
March 24th, 1922
Rio de Janeiro Protocol
May 24th, 1934
1.626 km.



COLOMBIAN
OCEAN
COMMISSION